

PRODUCT SHEET

COLLECTION:	Luminor
TYPE:	glazed porcelain floor tiles
SURFACE:	edge-ground, natural and honed - 10 mm thick
SIZES:	49x49
COLORI:	Diamante bianco, Quarzo grigio, Perla neutra avorio, Andalusite beige, Granato
MOSAICS:	288-module mosaic (24.5x49), 72-module mosaic (24.5x49), 48-module 2-colour mosaic (12x49), 16-module Chesterfield mosaic (24.5x49), 24-module mosaic (24.5x49), 72-module, metal decorative mix mosaic (24.5x49), 48-module mosaic (24.5x49)
DECORATIVE ACCENTS:	Cassiopea and Costellazioni modules (49x49), Cassiopea and Costellazioni strips (12x49), Cassiopea and Costellazioni corner strips (12x12), dot decorative tile (5.7x5.7)
TRIM PIECES:	skirting tile (8x49), step skirting tile (8x66), step bullnose tile (5x33.3), step corner bullnose tile (5x66), metal profile tiles (1x49 – 0.5x49)
TECHNICAL FEATURES:	compliant with the EN 14411/G Bla GL standards
INTENDED USE:	residential interiors



INFORMATION:

LUMINOR, seamless surfaces

The Luminor home is imbued with an eclectic, dynamic style.

The full system of floor and wall coverings allows the creation of a vast selection of design schemes, conceived to express a contemporary, style-aware approach to home design.

The Gardenia research laboratory has successfully produced large slabs with perfectly flat surfaces, taking their inspiration from the "seamless" look of the glass and marble walls widely used in architecture.

The 49x49 - 32.5x97.7 - 16.1x97.7 - 7.9x97.7 sizes allow for the creation of large, seamless surfaces on floors and walls. Since they are perfectly edge-ground, Luminor slabs can be placed flush against each other, making joints exceptionally narrow and creating an immaculate final effect.

Available in two shades, beige and grey, surfaces can have four types of finish (whole colour, basalt, chip and wood) and there is a choice of five decorative accents specifically designed for large surfaces. The floor tiles in eight colours coordinated with the wall tiles come in two surface finishes (honed and natural) and six types of mosaic. Special applications give this product an exclusive effect of brightness.



Gruppo Ceramiche Gardenia Orchidea S.p.A.

Via Canaletto, 27 - 41040 Spezzano di Fiorano (Modena) - Tel. +39 0536 849611 - Fax +39 0536 849856

www.gardenia.it - info@gardenia.it

PRODUCT SHEET

COLLECTION:	Luminor
TYPE:	wall tiles, light-bodied in single working size glazed porcelain coordinated floor tiles
SURFACE:	natural, edge-ground – 12 mm thick.
SIZES:	wall tiles: 32.5x97.7 – 16.1x97.7 – 7.9x97.7 – 16.1x48.1 Floor tiles: 32.5x32.5
COLORI:	T.U. beige, Basalto beige, Granigliato moka, Legno noce, T.U. grigio, Basalto grigio, Granigliato antracite, Legno antracite
MOSAICS:	strip mosaic (32.5x32.5), brick mosaic (32.5x48.8)
TRIM PIECES:	work-top bullnose (4.5x32.5), work-top bullnose connector (4.5x3), edging strip (1.3x33.3), edging strip connector (1.3x1.3)
DECORATIVE ACCENTS:	Orione, Pegaso, Cassiopea and Antares modules (32.5x97.7), cut glass module (32.5x97.7), glass listel (3.2x32.5), glass junction (3.2x3.2)
METAL TRIM PIECES:	cigar (0.4x32.5 – 0.4x97.7 – 1.5x32.5 – 1.5x97.7), dot (1.5x1.5), edging strip (1.3x97.7), edging strip connector (1.2x1.2), profile tiles (1.5x32.5 – 1.5x97.7- 0.4x32.5 – 0.4x97.7)
MARBLE TRIM PIECES:	classic bullnose (4x32.5), classic bullnose connector (4x2.3), modern bullnose (4x32.5), modern bullnose connector (4x2.3), cigar (1x32.5), cigar V-cap (1x1.7)
GLASS TRIM PIECES:	glass modules with two bonded sheets in colours beige/coffee chip , grey/black, purple/purple (sizes 3.9x32.5 – 16.1x32.5 – 7.9x97.7)
TECHNICAL FEATURES:	compliant with the EN 14411/L BIII GL standards
INTENDED USE:	residential interiors



**GARDENIA
ORCHIDEA**

Gruppo Ceramiche Gardenia Orchidea S.p.A.

Via Canaletto, 27 - 41040 Spezzano di Fiorano (Modena) - Tel. +39 0536 849611 - Fax +39 0536 849856

www.gardenia.it - info@gardenia.it

FLOOR TILES SURFACE



Matt surface. An Opaque surface which is smooth and delicate to the touch. It is suitable for every type of use and creates delicate effects. Softening the reflectance properties in any room.

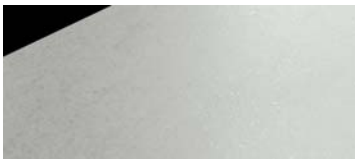


Semi-polished surface has a light satin finish and an original translucent "Wavy" imperceptible texture which is reminiscent of the surface of a water-polished stone.

WALL TILES SURFACE



Tinta Unita is silky to the touch and is characterised by an extraordinary natural luminosity.



Basalto is the imitation of a piece of "Natural Basalt", which masterfully recreated details of colour and texture.



Granigliato is a soft, rounded and slightly textured surface.



Legno expresses a refined, sober balance between graphics, texture and colour, it is characterised by a smooth surface.

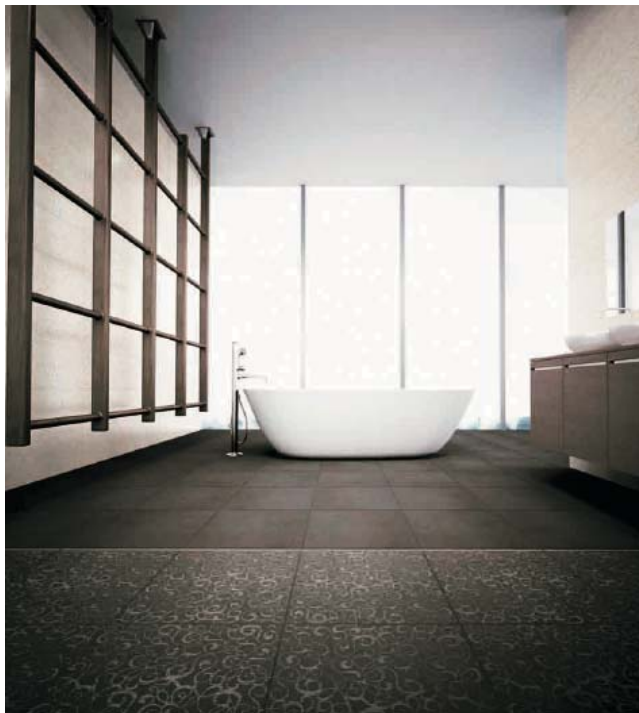


Gruppo Ceramiche Gardenia Orchidea S.p.A.

Via Canaletto, 27 - 41040 Spezzano di Fiorano (Modena) - Tel. +39 0536 849611 - Fax +39 0536 849856

www.gardenia.it - info@gardenia.it

Images recommended for the press



→ Basalto fumé moka

The Cassiopea decorations is highly valued due to its iridescent texture which becomes a highly precious finish for floor and wall tiles when combined with metal listels.



Mosaico Chesterfield nero perla

The design project using mesh-backed mosaics involves 6 types of units which are also available with a blend of precious metal finishes. The Chesterfield is a totally new unit which can underline the beauty of the Luminor surface in large geometric carpets.

 **GARDENIA
ORCHIDEA**

Gruppo Ceramiche Gardenia Orchidea S.p.A.

Via Canaletto, 27 - 41040 Spezzano di Fiorano (Modena) - Tel. +39 0536 849611 - Fax +39 0536 849856

www.gardenia.it - info@gardenia.it

Images recommended for the press

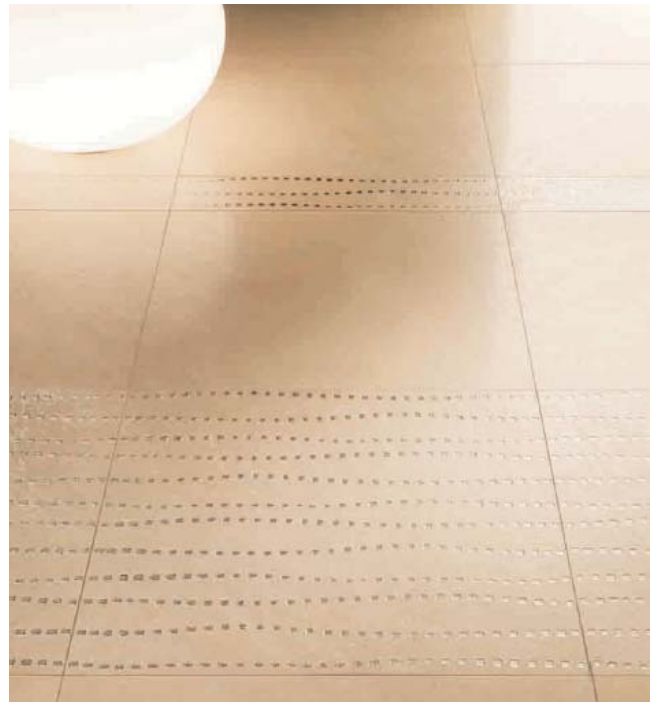


→ Quarzo metallo.

With the introduction of 8 new colours for floors available in the size 49x49 and 6 different mosaics, Luminor is becoming an important collection for home design projects. The Quarzo Metallo colour stands out due to the refined shiny material with which it is made, currently a prized material in interior design.



Perla neutra



Modulo Costellazioni / Andalusite beige



Gruppo Ceramiche Gardenia Orchidea S.p.A.

Via Canaletto, 27 - 41040 Spezzano di Fiorano (Modena) - Tel. +39 0536 849611 - Fax +39 0536 849856

www.gardenia.it - info@gardenia.it